

# LANDSCAPE SCHEDULE

## Deciduous Canopy Trees

Symbol	Botanical Name	Common Name	Quantity	Size	Root	Mature Height
AFA	<i>Acer x freemanii</i> 'Autumn Blaze'	Autumn Blaze Maple	2	3 to 3 1/2 inch caliper	Balled and Burlapped	45 Feet
OA	<i>Quercus alba</i>	White Oak	3	3 to 3 1/2 inch caliper	Balled and Burlapped	60 Feet
OR	<i>Quercus rubra</i>	Red Oak	2	3 to 3 1/2 inch caliper	Balled and Burlapped	60 Feet

## Deciduous Ornamental Trees

Symbol	Botanical Name	Common Name	Quantity	Size	Root	Mature Height
MPF	<i>Malus x 'Prairie Fire'</i>	Prairie Fire Crabapple	3	2 to 2 1/2 inch caliper	Balled and Burlapped	20 Feet

## Evergreen Trees

Symbol	Botanical Name	Common Name	Quantity	Size	Root	Mature Height
AC	<i>Abies concolor</i>	White Fir	10	8 to 10 foot height	Balled and Burlapped	50 Feet
JSW	<i>Juniperus scopulorum</i> 'Wichita Blue'	Wichita Blue Upright Juniper	10	5 to 6 foot height	Balled and Burlapped	15 Feet
PG	<i>Picea gleucsa</i>	White Spruce	8	8 to 10 foot height	Balled and Burlapped	50 Feet
PS	<i>Pinus strobus</i>	Eastern White Pine	11	10 to 12 foot height	Balled and Burlapped	60 Feet
TOS	<i>Thuja occidentalis</i> 'Smaragd'	Emerald Green Arborvitae	10	6 to 8 foot height	Balled and Burlapped	15 Feet

## Deciduous Shrubs

Symbol	Botanical Name	Common Name	Quantity	Size	Root	Mature Height
MP	<i>Myrica pensylvanica</i>	Northern Bayberry	14	30 to 36 inch height	#5 Container	6 to 8 Feet
PFA	<i>Potentilla fruticosa</i> 'Abbotswood'	Abbotswood Potentilla	12	24 to 30 inch height	#3 Container	3 Feet
POD	<i>Physocarpus opulifolius</i> 'Diablo'	Diablo Ninebark	15	30 to 36 inch height	#5 Container	5 to 8 Feet

## Evergreen Shrubs

Symbol	Botanical Name	Common Name	Quantity	Size	Root	Mature Height
JCC	<i>Juniperus chin.</i> 'Pfitzeriana Compacta'	Compact Pfitzer Juniper	21	18 to 24 inch spread	#3 Container	3 to 4 Feet
RM	<i>Rhododendron maximum</i>	Rosebay Rhododendron	12	3 to 4 foot height	Balled and Burlapped	8 to 10 Feet
TCC	<i>Taxus cuspidata</i> 'Capitata'	Upright Yew	3	4 to 5 foot height	Balled and Burlapped	Prune to height

# LANDSCAPE NOTES

- All plants shall meet or exceed the specifications of Federal, State and County laws requiring inspection for plant disease and insect control.
- Plant material shall conform with the "American Standard for Nursery Stock" by the American Association of Nurserymen, Inc. (ANSI Z60.1-2004).
- All plants shall be certified true to name by the nursery source. Plant names shall be in accordance with "Hortis Third" (1976) by the staff of the Liberty Hyde Bailey Hortorium, Cornell University. One plant from each species shall be tagged with name and size of the plant in accordance with the standards of practice of the American Association of Nurserymen. Botanical names shall take precedence over common names.
- Plant material shall be typical of their species and/or variety, with a normal habit of growth, sound, healthy and vigorous. They shall be well branched and densely foliated when in leaf, free of disease, insect pest, eggs or larvae. They shall have healthy well-developed root systems. All trees shall have straight single trunks with their main leader intact unless otherwise noted or approved.
- All landscaped areas to have 2" shredded bark mulch (color: black) over weed control fabric. No weed control fabric in areas of groundcover or perennial plantings.
- Provide protective covering of plant material during delivery and storage. Root balls shall not be cracked or broken. Do not prune plants prior to delivery. Remove unacceptable plant material immediately from the job site.
- Plant locations on the Drawings are approximate and are to be used only as a guide. Contractor shall provide all field engineering services to accurately stake out locations for all plants prior to installation. Do not begin excavation until Project Landscape Architect has approved specific layout.
- If requested by Project Landscape Architect, stake and guy each tree as shown on the applicable Drawings immediately after planting. Keep trees plumb and taut.
- If requested by Project Landscape Architect, wrap the trunks of all trees spirally from the ground line to above the lowest main branch.
- Perform all cultural care necessary to properly maintain plant viability and keep planted areas in a neat and orderly condition, including but not limited to:
  - Watering
  - Weed removal
  - Apply lime or sulphur to adjust soil pH to specific plant requirements
  - Restore or reshape earth saucers
  - Pruning
  - Adjust and tighten tree supports to maintain plants at their proper grades and vertical position
  - Replace mulch to maintain proper depth
- A minimum of 4 inches of topsoil shall be placed on all areas of disturbance to be reseeded.

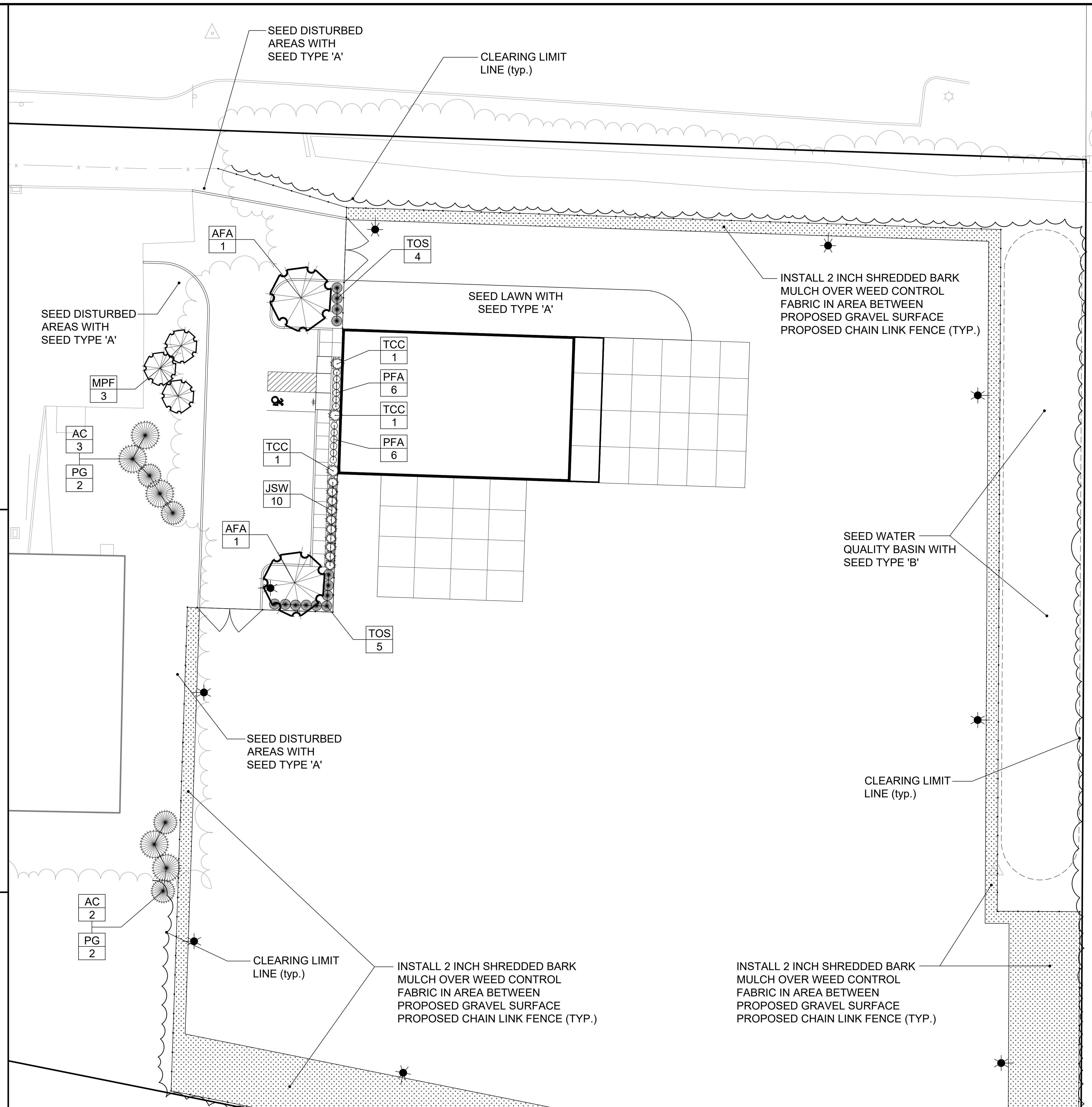
# SEED TYPES

## Seed Type A

Sun & Shade Mixture  
 By: Jonathan Green or approved equal  
 Seed rate: 25 pounds per 9,375 square feet  
 20% Darkstar II Perennial Ryegrass  
 20% Carmen Chewings Fescue  
 15% Deepblue Kentucky Bluegrass  
 15% Eugene Creeping Red Fescue  
 15% Yorkshire Dales Perennial Ryegrass  
 15% Salisbury Chewings Fescue

## Seed Type B

New England Erosion Control / Restoration Mix  
 By: New England Wetland Plants, Inc. or approved equal  
 Seed rate: 35 pounds per Acre  
 Switchgrass (*Panicum virgatum*), Virginia Wild Rye (*Elymus virginicus*), Creeping Red Fescue (*Festuca rubra*), Fox Sedge (*Carex vulpinoidea*), Creeping Bentgrass (*Agrostis stolonifera*), Silky Wild Rye (*Elymus villosus*), Partridge Pea (*Chamaecrista fasciculata*), Soft Rush (*Luncea effusus*), Flat-top Aster (*Aster umbellatus*), Nodding Bur-marigold (*Bidens cernua*), Joe-pye Weed (*Eupatorium maculatum*), Boneset (*Eupatorium perfoliatum*), Grass-leaved Goldenrod (*Solidago graminifolia*), Grey Goldenrod (*Solidago nemoralis*)



LANDSCAPE PLAN  
 PREPARED FOR  
**HARTZIO INVESTMENTS LLC**  
 135 FRESHWATER BOULEVARD  
 ENFIELD, CONNECTICUT

DATE: 09-22-2020  
 DRAWN BY: KLL  
 CHECKED BY: DSZ  
 SCALE: 1" = 30'

JOB NO: 09105  
 SHEET NO: 1 OF 2

Revisions:

No.	Date	Description
1	11-20-2020	Town comments
2	12-22-2020	Town comments

**F.A.H.**  
**F. A. Hesketh & Associates, Inc.**  
 3 Creamery Brook, East Granby, CT 06026  
 Phone (860) 653-8000 Fax (860) 844-8600  
 www.fahhsketh.com - Landscaping Architects  
 Civil & Traffic Engineers - Surveyors - Planners

LS-1