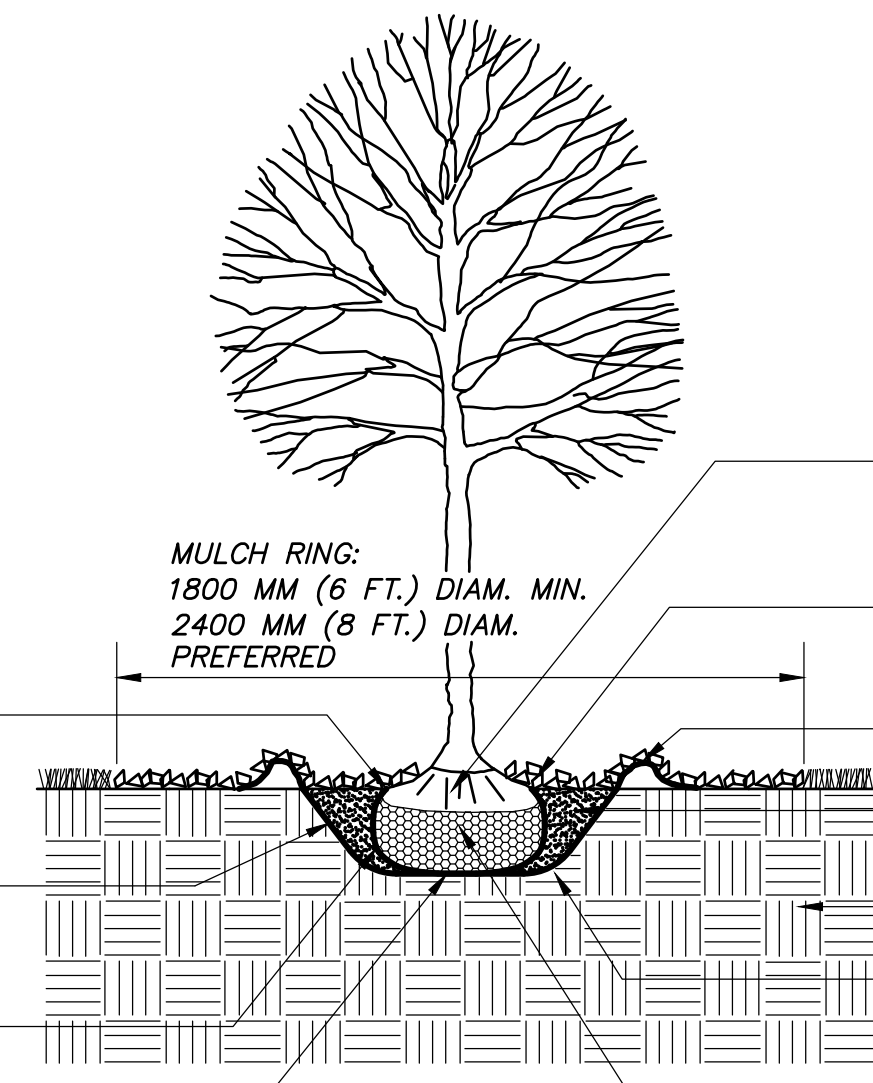


FACE TREE TO GIVE ITS BEST APPEARANCE AS ACCEPTED BY THE PROJECT LANDSCAPE ARCHITECT.

STAKE TREES ONLY UPON THE APPROVAL OF THE PROJECT LANDSCAPE ARCHITECT. SEE STAKING DETAIL(S) IF REQUIRED.

WRAP TREE TRUNKS ONLY UPON THE APPROVAL OF THE PROJECT LANDSCAPE ARCHITECT.



B&B TREE PLANTING DETAIL

N.T.S.

DO NOT HEAVILY PRUNE THE TREE AT PLANTING. PRUNE ONLY CROSSOVER LIMBS, CO-DOMINANT LEADERS, AND BROKEN OR DEAD BRANCHES. SOME INTERIOR TWIGS AND LATERAL BRANCHES MAY BE PRUNED; HOWEVER, DO NOT REMOVE THE TERMINAL BUDS OF BRANCHES THAT EXTEND TO THE EDGE OF THE CROWN.

EACH TREE MUST BE PLANTED SUCH THAT THE TRUNK FLARE IS VISIBLE AT THE TOP OF THE ROOT BALL. DO NOT COVER THE TOP OF THE ROOT BALL WITH SOIL.

50 MM (2 IN.) MULCH. DO NOT PLACE MULCH IN CONTACT WITH TREE TRUNK. MAINTAIN THE MULCH WEED-FREE.

100 MM (4 IN.) HIGH EARTH SAUCER BEYOND EDGE OF ROOT BALL.

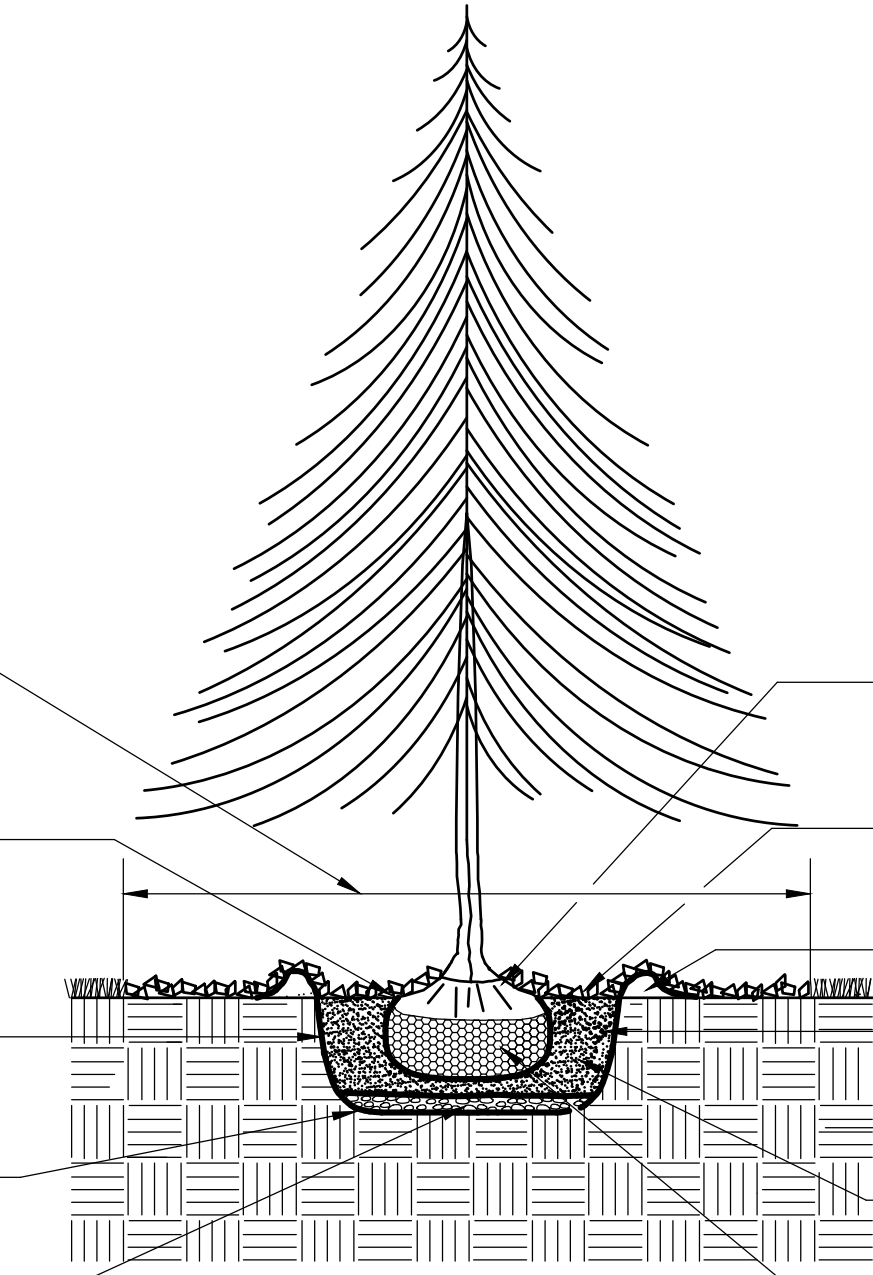
BACK FILL WITH PREPARED PLANTING MIXTURE.

EXISTING UNDISTURBED SUBGRADE.

DIAMETER OF TREE PIT TO BE THREE TIMES THE DIAMETER OF ROOT BALL.

REMOVE ALL TWINE, ROPE, AND BURLAP FROM TOP THIRD OF ROOT BALL. IF PLANT IS SHIPPED WITH A WIRE BASKET AROUND THE ROOT BALL, CAREFULLY REMOVE ENTIRE WIRE BASKET WITHOUT DISTURBING ROOT BALL.

STAKE TREES ONLY UPON THE APPROVAL OF THE PROJECT LANDSCAPE ARCHITECT. SEE STAKING DETAIL(S) IF REQUIRED.



EVERGREEN B&B TREE PLANTING DETAIL

N.T.S.

DO NOT HEAVILY PRUNE THE TREE AT PLANTING. PRUNE ONLY BROKEN OR DEAD BRANCHES.

FACE TREE TO GIVE ITS BEST APPEARANCE AS ACCEPTED BY THE PROJECT LANDSCAPE ARCHITECT.

EACH TREE MUST BE PLANTED SUCH THAT THE TRUNK FLARE IS VISIBLE AT THE TOP OF THE ROOT BALL. DO NOT COVER THE TOP OF THE ROOT BALL WITH SOIL.

50 MM (2 IN.) MULCH. DO NOT PLACE MULCH IN CONTACT WITH TREE TRUNK. MAINTAIN THE MULCH WEED-FREE.

100 MM (4 IN.) HIGH EARTH SAUCER BEYOND EDGE OF ROOT BALL.

BACK FILL WITH PREPARED PLANTING MIXTURE.

EXISTING UNDISTURBED SUBGRADE.

DIAMETER OF TREE PIT TO BE THREE TIMES THE DIAMETER OF ROOT BALL.

REMOVE ALL TWINE, ROPE, AND BURLAP FROM TOP THIRD OF ROOT BALL. IF PLANT IS SHIPPED WITH A WIRE BASKET AROUND THE ROOT BALL, CAREFULLY REMOVE ENTIRE WIRE BASKET WITHOUT DISTURBING ROOT BALL.

DO NOT HEAVILY PRUNE THE SHRUB AT PLANTING. PRUNE ONLY BROKEN OR DEAD BRANCHES.

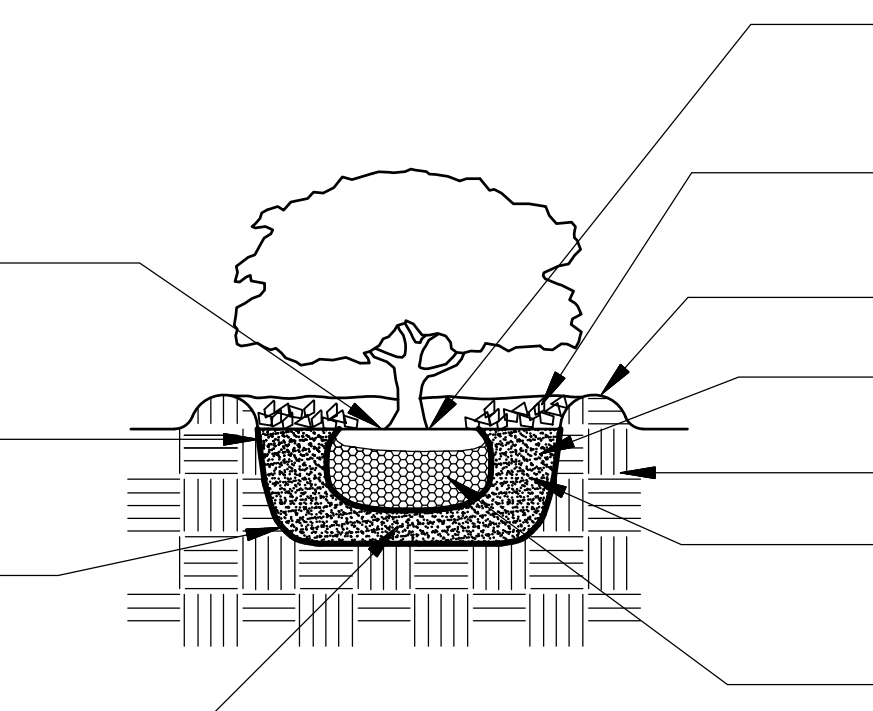
FACE SHRUB TO GIVE ITS BEST APPEARANCE AS ACCEPTED BY THE PROJECT LANDSCAPE ARCHITECT.

SET TOP OF ROOT BALL FLUSH TO GRADE OR 25-50 MM (1-2 IN.) HIGHER IN SLOWLY DRAINING SOILS.

VERTICAL TO 1:1 SLOPE ON SIDES OF PLANTING HOLE.

TAMP SOIL AROUND ROOT BALL BASE FIRMLY SO THAT ROOT BALL DOES NOT SHIFT.

25 MM (1 INCH) PREPARED PLANTING MIXTURE. TAMP TO ACHIEVE EVEN, FIRM BASE FOR ROOT BALL.



SHRUB PLANTING DETAIL

N.T.S.

EACH SHRUB MUST BE PLANTED SUCH THAT THE TRUNK FLARE IS VISIBLE AT THE TOP OF THE ROOT BALL. DO NOT COVER THE TOP OF THE ROOT BALL WITH SOIL.

50 MM (2 IN.) MULCH. DO NOT PLACE MULCH IN CONTACT WITH TRUNK. MAINTAIN THE MULCH WEED-FREE.

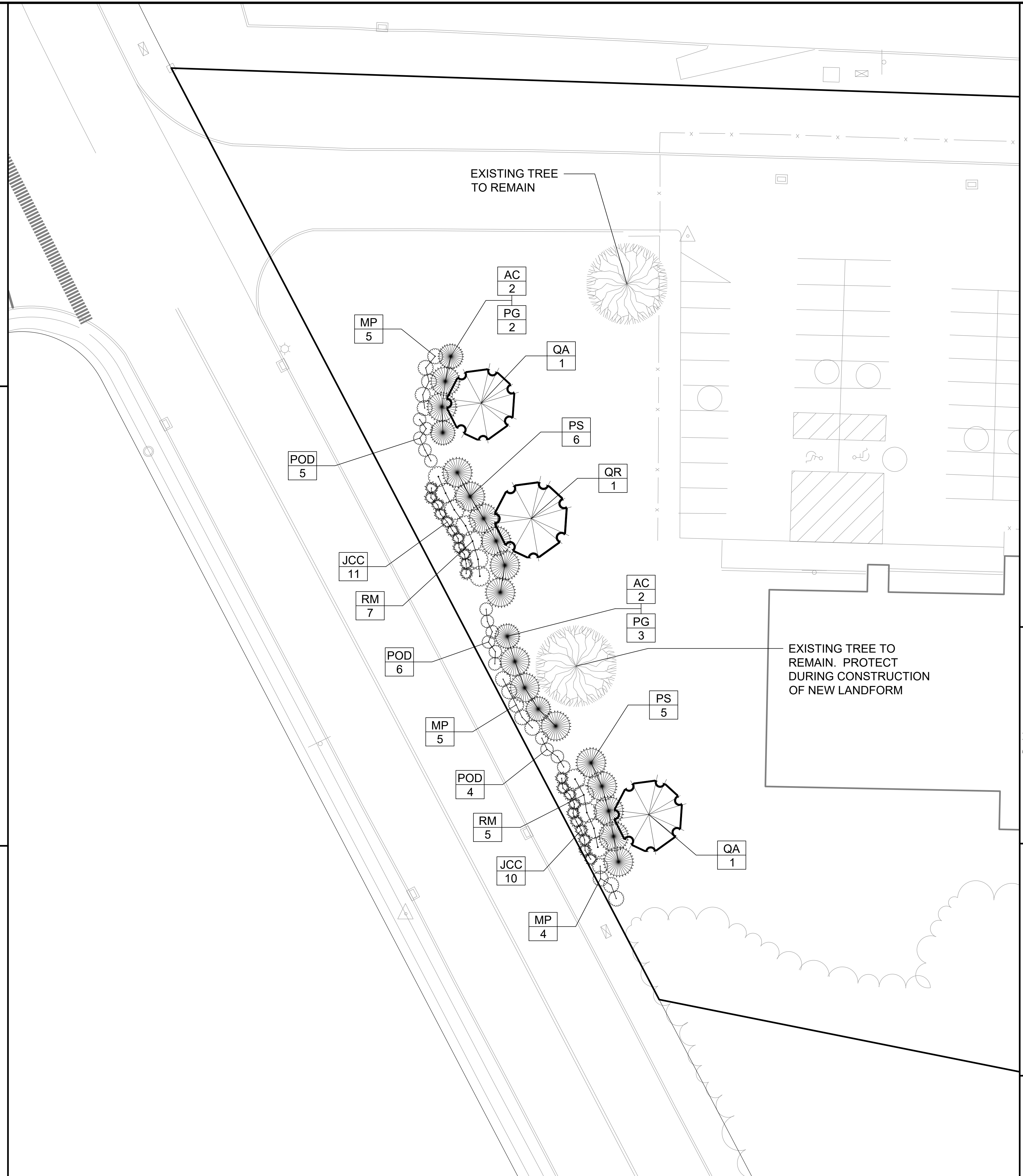
100 MM (4 IN.) HIGH EARTH SAUCER BEYOND EDGE OF ROOT BALL.

BACK FILL WITH PREPARED PLANTING MIXTURE.

EXISTING UNDISTURBED SUBGRADE.

DIAMETER OF SHRUB PIT TO BE THREE TIMES THE DIAMETER OF ROOT BALL.

REMOVE ALL TWINE, ROPE, AND BURLAP FROM TOP THIRD OF ROOT BALL. IF SHRUB IS SHIPPED IN A CONTAINER, REMOVE CONTAINER AND CAREFULLY LOOSEN ROOT MASS.



No.	Date	Description

LANDSCAPE PLAN
 PREPARED FOR
HARTIZO INVESTMENTS LLC
 135 FRESHWATER BOULEVARD
 ENFIELD, CONNECTICUT
 Date: 12-22-2020 Drawn by: KLL Job no: 09105
 Scale: 1" = 20' Checked by: DSZ Sheet no: 2 OF 2
 © \2009\09105\Submittal\2020-12-22 Town Comments\FRESHWATER_LS-2_2020_11:02:26 PM

LS-2

FAH
F. A. Hesketh & Associates, Inc.
 3 Creamery Brook, East Granby, CT 06026
 Phone (860) 653-8000 Fax (860) 844-8600
 www.fahhsketh.com - Landscaping Architects
 Civil & Traffic Engineers - Surveyors - Planners