




### SIGNAGE LEGEND

| Symbol | Graphic   | Catalog Number                          | Quantity |
|--------|---|---|----------|
| A      |  | New Reserved Sign<br>(CT Building Code) | 1        |
| B      |  | 31-0648                                 | 1        |
| C      |  | 31-0552                                 | 1        |

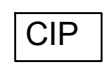

### PAVEMENT MARKING LEGEND

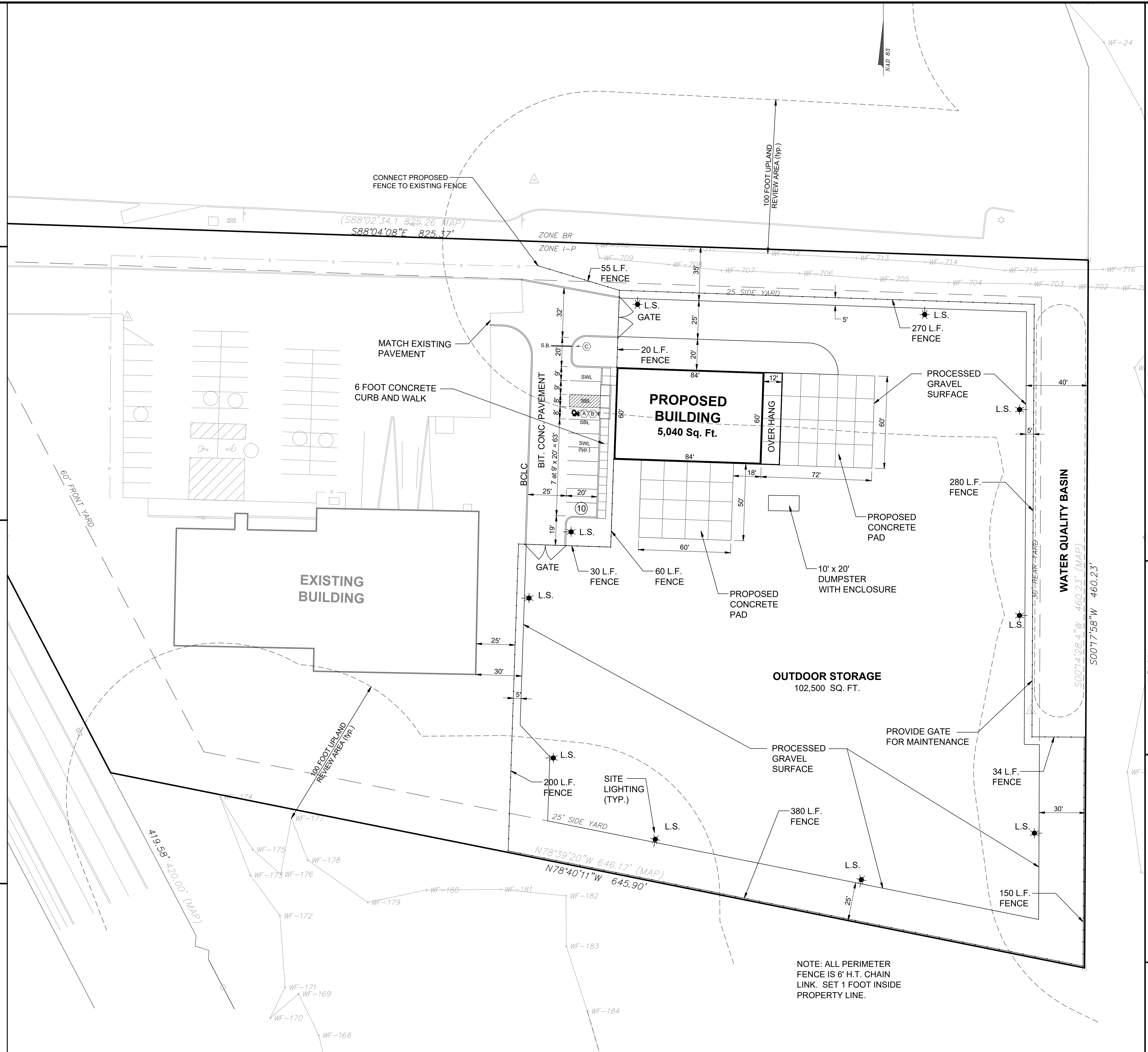
| Symbol | Type                      |
|--------|---------------------------|
| SWL    | Painted Single White Line |
| SBL    | Painted Single Blue Line  |

### SIGNAGE AND PAVEMENT MARKING NOTES

- Stop bars (SB) shall be painted with white traffic paint (12 inches wide)
- All standard parking stalls and centerlines shall be painted with white traffic paint (4 inches wide).
- Traffic control arrows shall be painted with white traffic paint.
- All accessible parking stalls, aisles and symbols of accessibility shall be painted with blue traffic paint (4 inches wide).
- Centerlines shall be painted with yellow traffic paint and shall consist of double lines (4 inches wide)
- Fire lanes and other areas of parking prohibition shall be painted with yellow traffic paint (4 inches wide)
- All on-site traffic paint shall conform to CT DOT Form 818, Article M.07
- All pavement markings and signs shall conform to "Manual On Uniform Traffic Control Devices", "Standard Alphabets For Highway Signs And Pavement Markings", CT DOT 817, State Building Code and ADA Requirements and as shown on the details
- Sign catalog numbers obtained from "Connecticut Department of Transportation, Catalog of Signs", Last Revised 7/3/19. Contractor to confirm sign types prior to installation.
- Install additional fire lane markings and signage as directed by the Enfield Fire Department Officials.

### CURB TYPE LEGEND

| Symbol   | Type                        |
|--|-----------------------------|
|  | Cast-In-Place Concrete Curb |
|  | Extruded Concrete Curb      |



NOTE: ALL PERIMETER FENCE IS 6' H.T. CHAIN LINK. SET 1 FOOT INSIDE PROPERTY LINE.

LA-1

**F. A. Hesketh & Associates, Inc.**  
 3 Creamery Brook, East Granby, CT 06026  
 Phone (860) 653-8000 Fax (860) 844-8600  
 www.fahsketh.com · Planners · Landscape Architects

Civil & Traffic Engineers · Planners

**FAH**

LAYOUT PLAN  
 PREPARED FOR  
**HARTZITO INVESTMENTS, LLC**  
**SOUTH MEADOWS NO. 9, LLC**  
 135 FRESHWATER BOULEVARD  
 ENFIELD, CONNECTICUT

Revisions:

| No. | Date       | Description   |
|-----|------------|---------------|
| 1   | 10-26-2020 | Town comments |
| 2   | 11-20-2020 | Town comments |
| 3   | 12-22-2020 | Town comments |
| 4   | 01-26-2021 | Town comments |

Date: 10-02-2020 Drawn by: KLL Job no: 09105  
 Scale: 1" = 30' Checked by: DSZ Sheet no: 1 OF 1  
 C:\2009\09105\Submittal\2021-01-26 Town Comments\FRE0104.dwg, LA-1, con, 25, 2021 = 11:35:38 AM