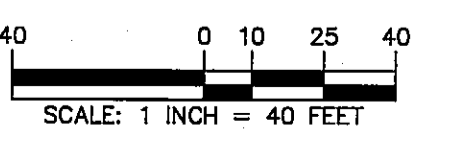
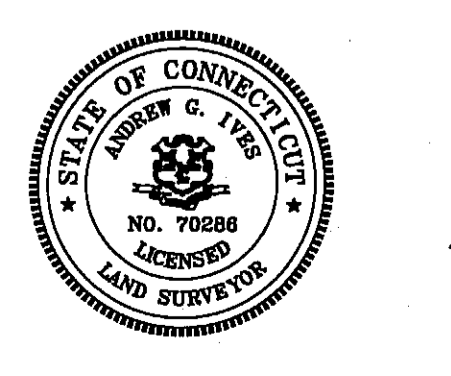
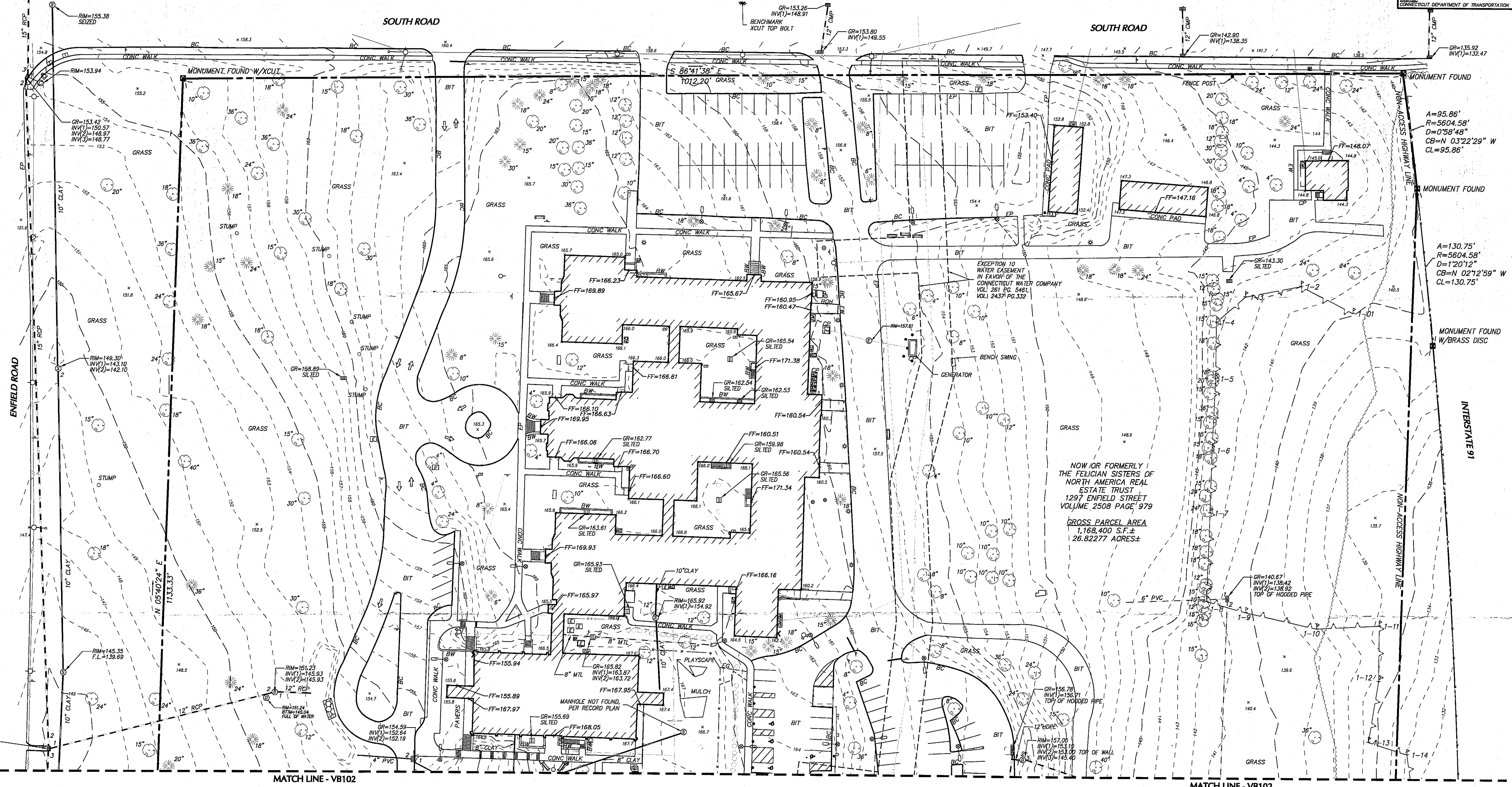
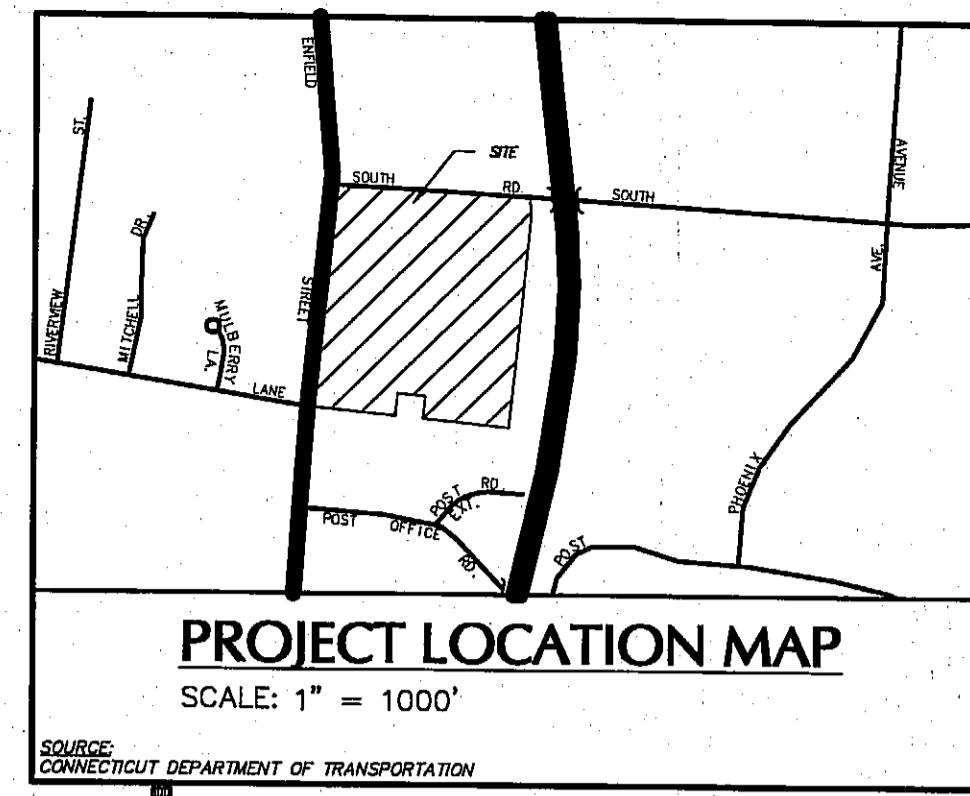


**LEGEND** (NOT SHOWN TO SCALE)

- |  |  |  |  |  |
|--|--|--|--|--|
| <ul style="list-style-type: none"> <li>— AIR CONDITIONING UNIT</li> <li>— BOLLARD</li> <li>— COLUMN</li> <li>— FLAG POLE</li> <li>— MAILBOX</li> <li>— SIGN</li> <li>— SHRUB</li> <li>— TREE</li> <li>— WETLAND FLAG</li> <li>— GROUND LIGHT</li> <li>— CATCH BASIN</li> <li>— CLEANOUT</li> <li>— ELECTRIC BOX</li> <li>— ELECTRIC METER</li> <li>— FIRE HYDRANT</li> <li>— GAS METER</li> <li>— GAS VALVE</li> </ul> | <ul style="list-style-type: none"> <li>— GUY WIRE</li> <li>— LIGHT POLE</li> <li>— MANHOLE (TYPE AS LABELED)</li> <li>— POWER POLE</li> <li>— ROOF DRAIN</li> <li>— STANDPIPE</li> <li>— TRAFFIC SIGNAL BOX</li> <li>— PEDESTRIAN PUSH BUTTON</li> <li>— WATER METER</li> <li>— WATER VALVE</li> <li>— SPOT ELEVATION</li> <li>— BITUMINOUS</li> <li>— CONCRETE</li> <li>— CONCRETE PAD</li> <li>— LANDSCAPED AREA</li> <li>— BUILDING OVERHANG</li> <li>— BOTTOM OF WALL</li> </ul> | <ul style="list-style-type: none"> <li>— EP</li> <li>— EG</li> <li>— EW</li> <li>— DW</li> <li>— BC</li> <li>— CC</li> <li>— GC</li> <li>— SC</li> <li>— SWS</li> <li>— BWS</li> </ul> | <ul style="list-style-type: none"> <li>— EDGE OF PAVEMENT</li> <li>— EDGE OF GRAVEL</li> <li>— EDGE OF WALK</li> <li>— DETECTABLE WARNING</li> <li>— BITUMINOUS CURB</li> <li>— CONCRETE CURB</li> <li>— GRANITE CURB</li> <li>— SLOPED GRANITE CURB</li> <li>— SINGLE WHITE STRIPE</li> <li>— BROKEN WHITE STRIPE</li> <li>— METAL GUARD RAIL</li> <li>— STOCKADE FENCE</li> <li>— CHAINLINK FENCE</li> <li>— IRON FENCE</li> <li>— TREE LINE</li> <li>— OVERHEAD WIRE</li> <li>— WETLAND LINE</li> </ul> | <ul style="list-style-type: none"> <li>— EASEMENT LINE</li> <li>— PROPERTY LINE</li> <li>— RIGHT-OF-WAY LINE</li> <li>— CONTOUR LINE</li> <li>— DRAINAGE MARK OUT LINE</li> <li>— ELECTRIC MARK OUT LINE</li> <li>— COMMUNICATION MARK OUT LINE</li> <li>— GAS MARK OUT LINE</li> <li>— SANITARY SEWER MARK OUT LINE</li> <li>— WATER MARK OUT LINE</li> <li>— REFERENCE UTILITY LINE (TYPE AS NOTED) - PLOTTED FROM EXISTING MAPPING</li> </ul> |
|--|--|--|--|--|



Date	Description	No.
6/25/21	ADDITIONAL TOPO	1
REVISIONS		

"TO MY KNOWLEDGE AND BELIEF, THIS MAP IS SUBSTANTIALLY CORRECT AS NOTED HEREON."

**LANGAN**

Langan CT, Inc.  
555 Long Wharf Drive  
New Haven, CT 06511

T: 203.562.6771 F: 203.789.6142 www.langan.com

Andrew G. Ives  
Professional Land Surveyor  
CT STATE LIC. NO. 70286

Project  
**1297 ENFIELD STREET**  
ENFIELD CONNECTICUT

Drawing Title  
**BOUNDARY & TOPOGRAPHIC SURVEY**

Project No.  
**140233201**

Date  
**MAY 10, 2021**

Drawn By  
**SG**

Checked By  
**ACI**

Drawing No.  
**VB-101**

Sheet 1 of 2

RECEIVED  
ENFIELD PLANNING DEPT  
28/1 SEP - 3 PM 11 13

PROJECT NO. 140233201

LANGAN

**NOTES**

1. THIS SURVEY HAS BEEN PREPARED PURSUANT TO THE REGULATIONS OF CONNECTICUT STATE AGENCIES SECTIONS 20-300b-1 THROUGH 20-300b-20 AND THE STANDARDS FOR SURVEYS AND MAPS IN THE STATE OF CONNECTICUT AS ADOPTED BY THE CONNECTICUT ASSOCIATION OF LAND SURVEYORS, INC. ON SEPTEMBER 26, 1996.  
 c. THIS SURVEY IS A PROPERTY SURVEY CONFORMING TO A HORIZONTAL ACCURACY OF A-2 AND A TOPOGRAPHIC SURVEY CONFORMING TO A T-2 ACCURACY. THE BOUNDARY DETERMINATION IS A RESURVEY. THE PURPOSE OF THIS SURVEY IS TO PROVIDE A BOUNDARY OPINION AND DEPICT SITE FEATURES FOR FUTURE SITE DEVELOPMENT.

2. THIS SURVEY IS BASED UPON EXISTING PHYSICAL CONDITIONS FOUND AT THE SUBJECT SITE, DEED INFORMATION AND THE FOLLOWING REFERENCES:

A. COMMITMENT FOR TITLE INSURANCE ISSUED BY OLD REPUBLIC NATIONAL TITLE COMPANY. COMMITMENT NUMBER: 2101423, EFFECTIVE DATE MARCH 12, 2021. SCHEDULE B SECTION II:

- 1A. NOT SURVEY RELATED
- 1B. SURVEY PROVIDED

- 1C. NOT SURVEY RELATED
- 2-5. NOT SURVEY RELATED
- 6. SEWER EASEMENT IN VOLUME 340 PAGE 141 OF THE ENFIELD LAND RECORDS, DEPICTED ON SURVEY.
- 7-9. NOT SURVEY RELATED
- 10. WATER MAIN EASEMENT IN VOLUME 2437 PAGE 331 OF THE ENFIELD LAND RECORDS, DEPICTED ON SURVEY.
- 11-13. NOT SURVEY RELATED
- 14. CURRENT NON-ACCESS HIGHWAY LINE FOR I-91 IS DEPICTED AS THE EASTERLY PROPERTY LINE OF THE SUBJECT PREMISES.
- 15. CURRENT NON-ACCESS HIGHWAY LINE FOR I-91 IS DEPICTED AS THE EASTERLY PROPERTY LINE OF THE SUBJECT PREMISES. RIGHT TO DRAIN ACQUIRED DOES NOT PERTAIN TO SUBJECT PREMISES.

B. MAP TITLED "ENFIELD MONTESSORI SCHOOL 1325 ENFIELD STREET ENFIELD, CT 06082 FELICAN SISTER OF NORTH AMERICA REAL ESTATE TRUST 871 MERCER ROAD BEAVER FALLS, PA 15010" SCALE: 1" = 60' DATED 02/09/2015 BY JCJ ARCHITECTURE 36 PROSPECT STREET HARTFORD, CT 06103 ON FILE VOL 266 PG 49&51

C. MAP TITLED "TOWN OF ENFIELD, MAP SHOWING LAND & RIGHTS OF ACCESS ACQUIRED FROM DANIEL & ELEANOR LIBBY BY THE STATE OF CONNECTICUT, HARTFORD-SPRINGFIELD-EXPRESSWAY", SCALE: 1"=40'. DATED: JANUARY 1957, BY: NEWMAN E. ARGRAVES, ON FILE VOL 3 PG 118 & 119.

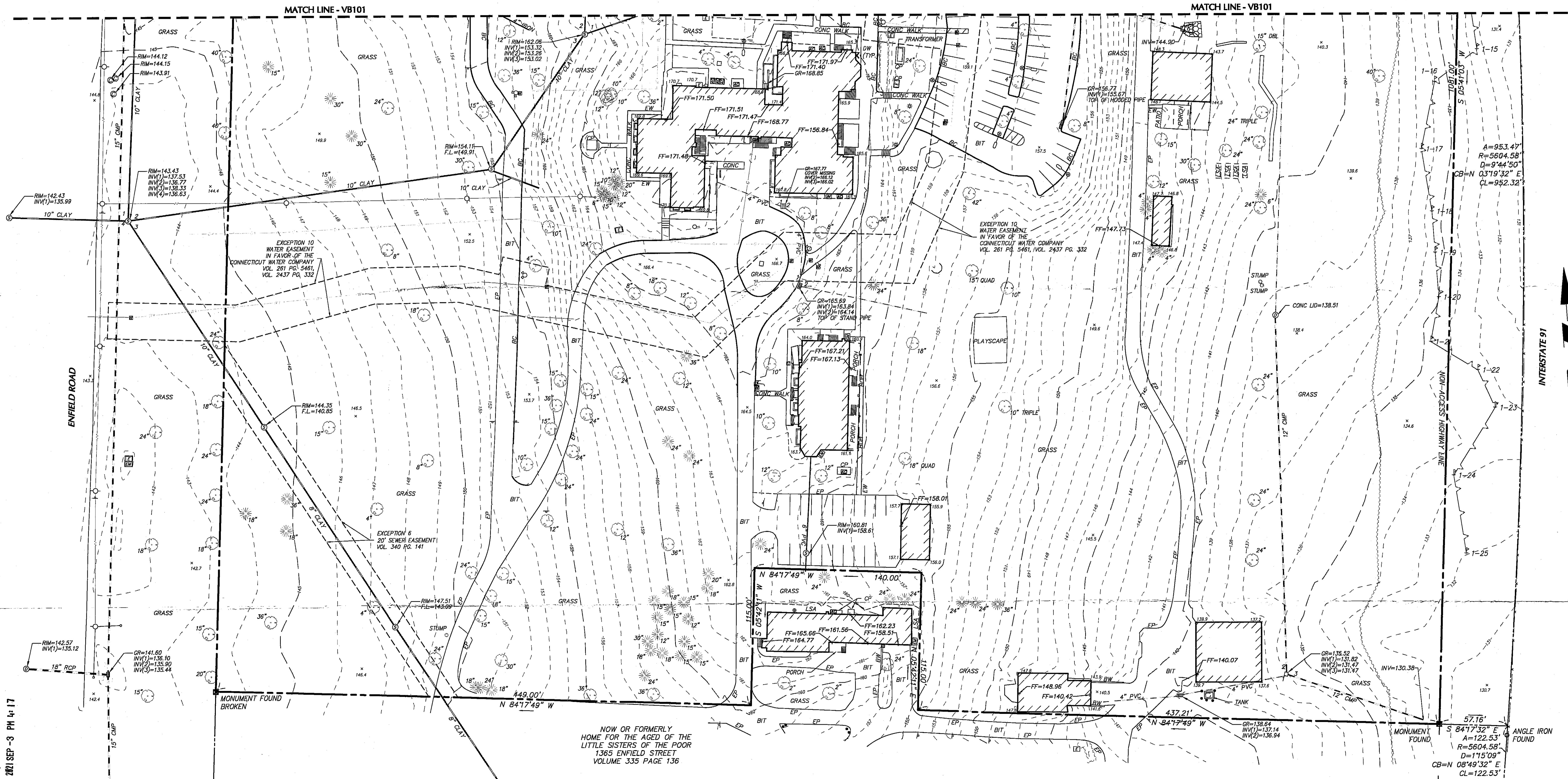
- 3. THE MERIDIAN OF THIS SURVEY IS REFERENCED TO CONNECTICUT STATE PLANE COORDINATE SYSTEM NAD 83 (EPOCH 2011). POSITION WAS DETERMINED BY GLOBAL NAVIGATION SATELLITE SYSTEMS (GNSS) AS PROVIDED BY HXGN SMARTNET CONTINUOUSLY OPERATED REFERENCE STATIONS (CORS).
- 4. ELEVATIONS SHOWN ARE REFERENCED TO NORTH AMERICAN VERTICAL DATUM OF 1988 (NAV88) (GEOID 12B) AS DETERMINED BY GNSS
- 5. PLANIMETRIC AND TOPOGRAPHIC INFORMATION SHOWN HEREON HAS BEEN OBTAINED FROM GROUND SURVEYS BY LANGAN CT, INC. FIELD WORK COMPLETED DURING THE MONTH OF APRIL 2021.
- 6. AS PER THE NATIONAL FLOOD INSURANCE PROGRAM FIRM MAP

ENTITLED "HARTFORD COUNTY, CONNECTICUT PANEL 227 OF 675, MAP NUMBER 09003C0227F, EFFECTIVE DATE SEPTEMBER 26, 2008" THE PROJECT AREA IS IN ZONE X (UNSHADED).

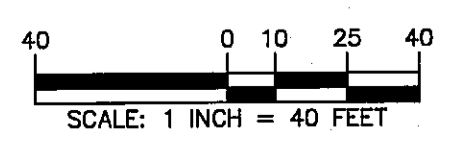
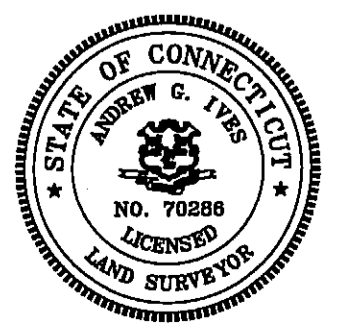
- 7. UNLESS SPECIFICALLY NOTED HEREON, STORM AND SANITARY SEWER INFORMATION (INCLUDING PIPE INVERT, PIPE MATERIAL, AND PIPE SIZE) WAS OBSERVED AND MEASURED AT FIELD LOCATED STRUCTURES (MANHOLES/CATCH BASINS, ETC.). CONDITIONS CAN VARY FROM THOSE ENCOUNTERED AT THE TIMES WHEN AND LOCATIONS WHERE DATA IS OBTAINED, DESPITE MEETING THE REQUIRED STANDARD OF CARE. THE SURVEYOR CANNOT, AND DOES NOT WARRANT THAT PIPE MATERIAL AND/OR PIPE SIZE THROUGHOUT THE PIPE RUN ARE THE SAME AS THOSE OBSERVED AT EACH STRUCTURE, OR THAT THE PIPE RUN IS STRAIGHT BETWEEN THE LOCATED STRUCTURES.
- 8. ADDITIONAL UTILITY (WATER, GAS, ELECTRIC ETC.) DATA MAY BE SHOWN FROM FIELD LOCATED SURFACE MARKINGS (BY OTHERS), EXISTING STRUCTURES, AND/OR FROM EXISTING DRAWINGS.
- 9. UNLESS SPECIFICALLY NOTED HEREON, THE SURVEYOR HAS NOT EXCAVATED TO PHYSICALLY LOCATE THE UNDERGROUND UTILITIES.

THE SURVEYOR MAKES NO GUARANTEES THAT THE SHOWN UNDERGROUND UTILITIES ARE EITHER IN SERVICE, ABANDONED OR SUITABLE FOR USE, NOR ARE IN THE EXACT LOCATION OR CONFIGURATION INDICATED HEREON.

- 10. ALL BUILDINGS AND STRUCTURES WERE LOCATED AND MEASURED AT GROUND LEVEL. THE SURVEYOR MAKES NO DETERMINATIONS OR GUARANTEES AS TO THE ABSENCE, EXISTENCE OR LOCATION OF UNDERGROUND STRUCTURES, FOUNDATIONS, FOOTINGS, PROJECTIONS, WALLS, TANKS, SEPTIC SYSTEMS, ETC. NO TEST PITS, EXCAVATIONS OR GROUND PENETRATING RADAR WERE PERFORMED AS PART OF THIS SURVEY.
- 11. PRIOR TO ANY DESIGN OR CONSTRUCTION, THE PROPER UTILITY AGENCIES MUST BE CONTACTED FOR VERIFICATION OF UTILITY TYPE AND FOR FIELD LOCATIONS.
- 12. THIS SURVEY IS NOT VALID WITHOUT THE EMBOSSED OR INKED SEAL OF THE PROFESSIONAL.
- 13. WETLANDS DELINEATED BY ENVIRONMENTAL PLANNING SERVICES THE WEEK OF APRIL 14, 2021. ALL FLAGS WERE FIELD LOCATED ON MAY 14, 2021.



RECEIVED  
ENFIELD PLANNING DEPT.  
2021 SEP-3 PM 4:17



Date	Description	No.
6/25/21	ADDITIONAL TOPO	1
REVISIONS		

"TO MY KNOWLEDGE AND BELIEF, THIS MAP IS SUBSTANTIALLY CORRECT AS NOTED HEREON."

PROFESSIONAL LAND SURVEYOR  
CT STATE LIC. NO. 70286

**LANGAN**  
 Langan CT, Inc.  
 555 Long Wharf Drive  
 New Haven, CT 06511  
 T: 203.662.6771 F: 203.786.6142 www.langan.com

Project  
**1297 ENFIELD STREET**  
 ENFIELD CONNECTICUT

Drawing Title  
**BOUNDARY & TOPOGRAPHIC SURVEY**

Project No.  
**140233201**  
 Date  
**MAY 10, 2021**  
 Drawn By  
**SG**  
 Checked By  
**ACI**

Drawing No.  
**VB-102**  
 Sheet 2 of 2